

A background image of a Denver cityscape with various buildings and a park area with trees and a person on a bicycle.

Denverright.

Your Voice. Our Future.

Blueprint Denver

Task Force Subcommittee Meetings – April 2018



Agenda

- Updates – 25 minutes
 - Community workshops in Feb-March
 - Task force role in community outreach and ownership of plan
 - Change types
- Discussion on draft recommendations – 1 hr 15 min
- What are the most important recommendations for your topic? – 15 minutes

1. Updates

Community input, by the numbers....

- **11** workshops were held
- **600** community members attended
- **566** demographic surveys were filled out
- **733** policy worksheets were completed
- **475 people** responded to an online survey



Task Force role in community outreach and ownership of plan

Task Force Resources:

- Staff will develop **talking points** for Task Force use
- Provide additional **training** as needed

- What else would help you?

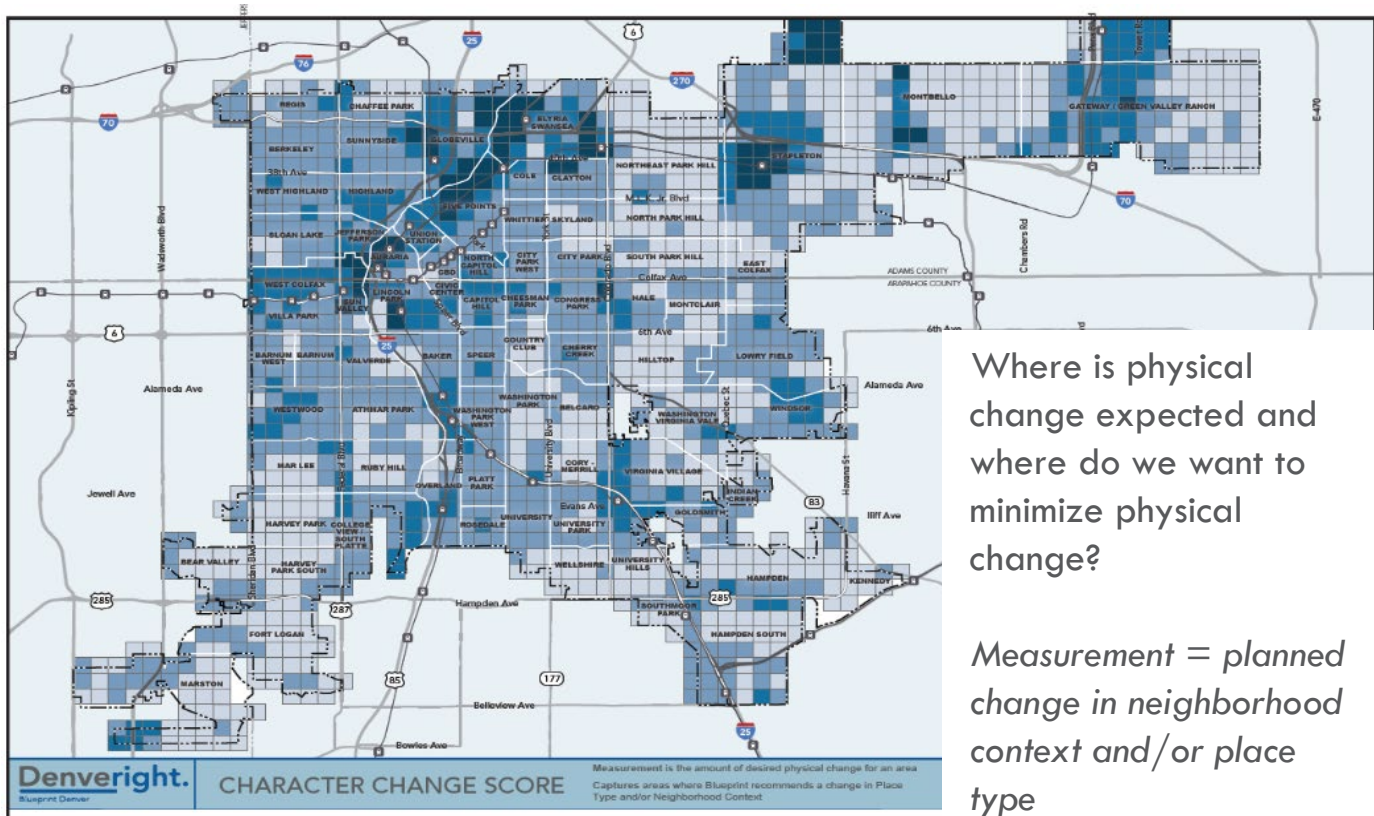
Blueprint 2018: Change Framework

- Change is not the same as growth/private development
- Growth strategy is separate from a larger framework for guiding how different neighborhoods will evolve over time

CHANGETYPES



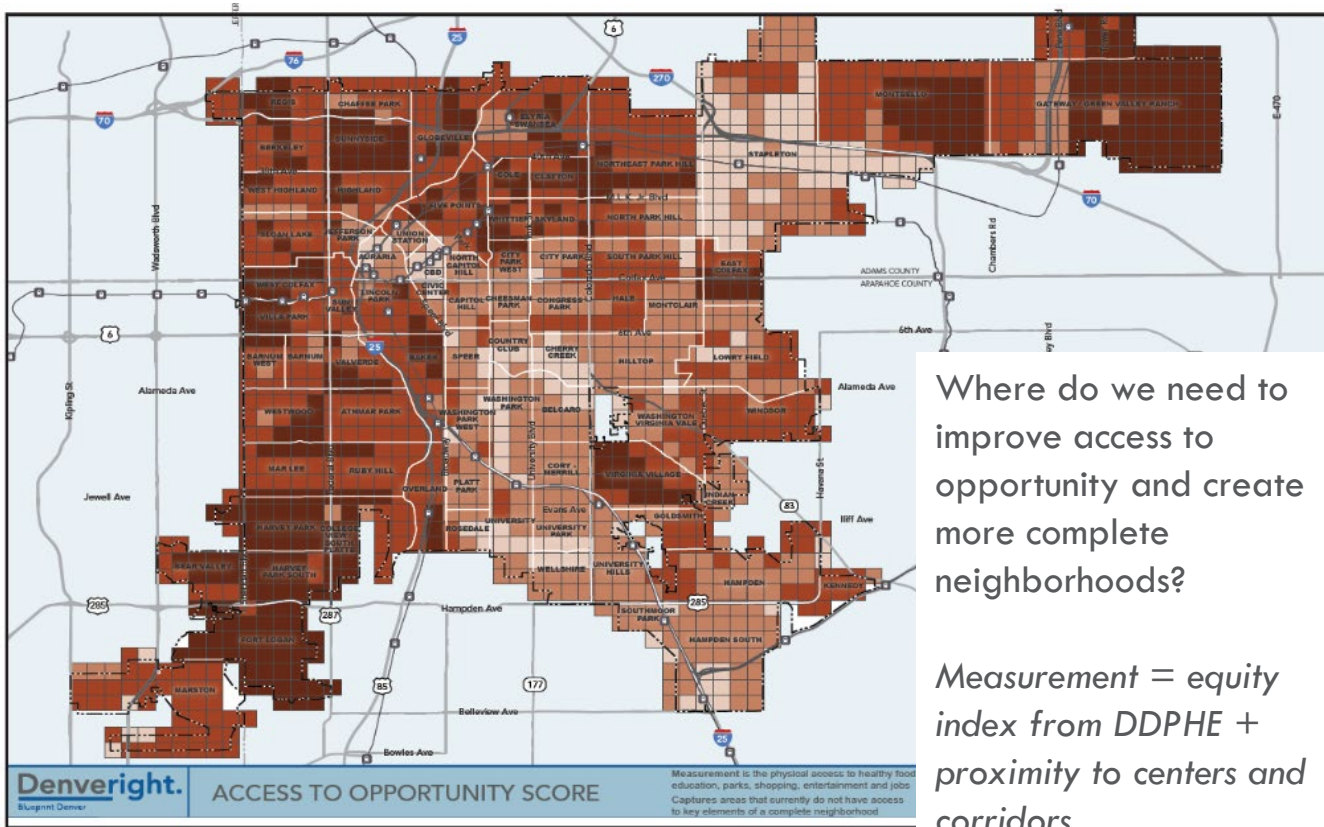
Character Change



Where is physical change expected and where do we want to minimize physical change?

Measurement = planned change in neighborhood context and/or place type

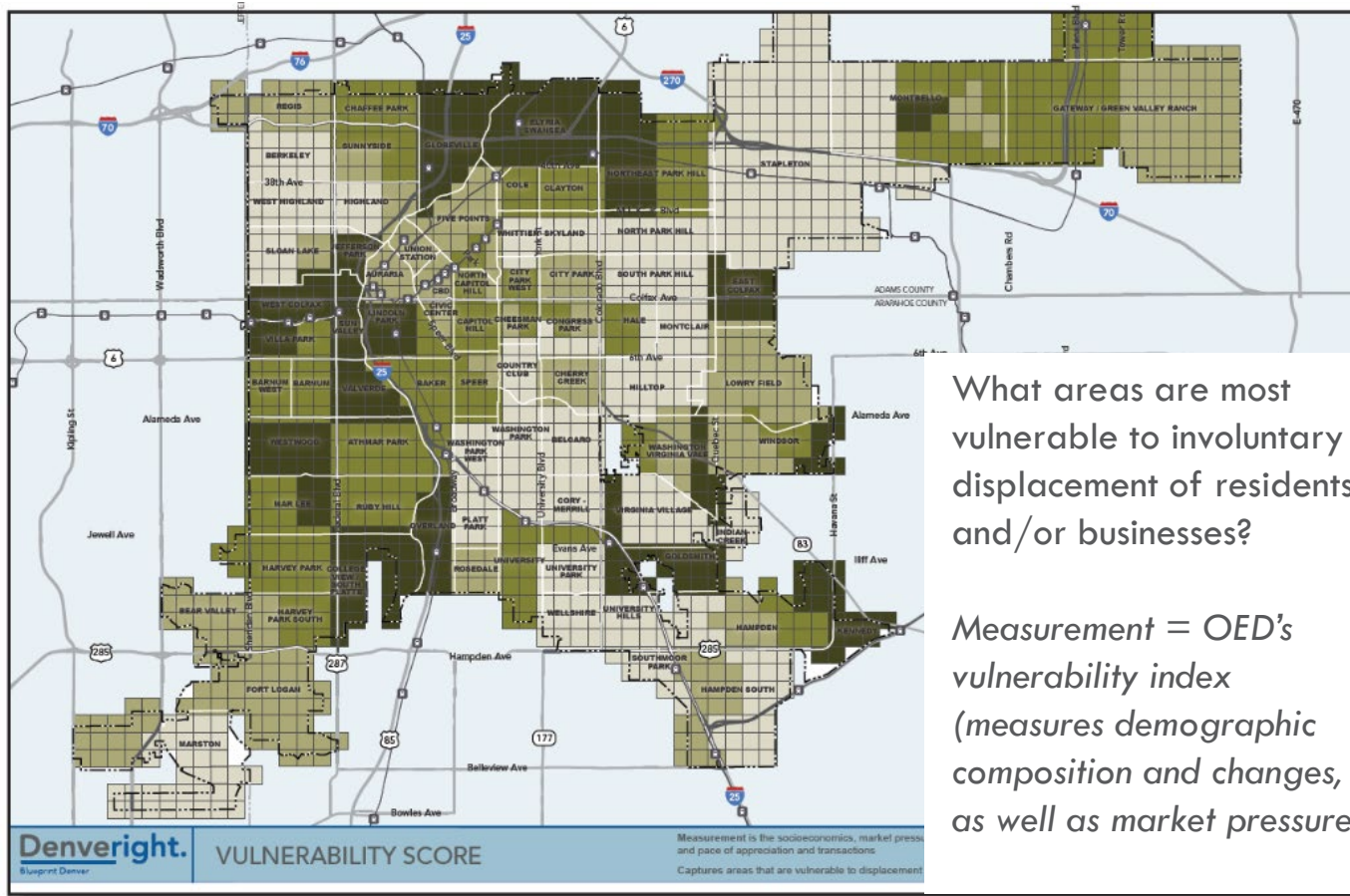
Access to Opportunity



Where do we need to improve access to opportunity and create more complete neighborhoods?

Measurement = equity index from DDPHE + proximity to centers and corridors

Vulnerability to Displacement



What areas are most vulnerable to involuntary displacement of residents and/or businesses?

Measurement = OED's vulnerability index (measures demographic composition and changes, as well as market pressure)

Urban Design

- Through the lens of a land use and transportation plan, does the draft recommendations address urban design issues related to:
 - Promoting design excellence
 - Creating great public space
 - Preservation
 - Neighborhood character
 - Regulatory changes

What are the most important recommendations for urban design?

Equity

- Through the lens of a land use and transportation plan, does the draft recommendations address equity issues related to:
 - Housing
 - Transportation
 - Jobs
 - Daily needs
 - Planning process and community engagement

What are the most important recommendations for equity?

4. Next Steps

Next Steps

- Future Task Force meeting dates to be determined
- Public review draft released in the summer!

